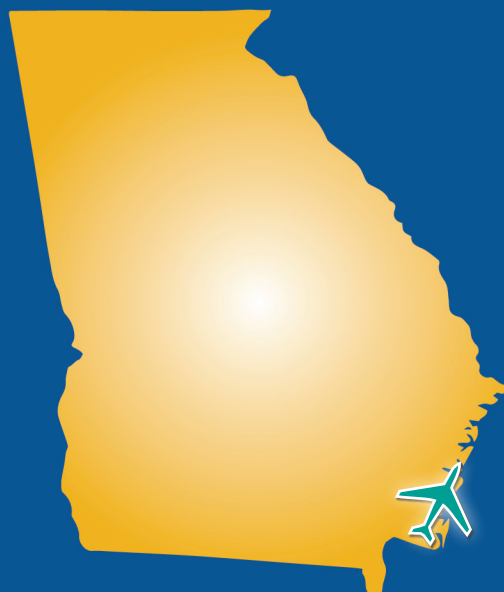




Georgia Department of Transportation



• ECONOMIC IMPACT REPORT FOR •
JEKYLL ISLAND AIRPORT



September 2020

According to Site Selection Magazine, Georgia is **ranked as the #1 state** for doing business.

Georgia Airports Mean Business.

Airports in Georgia generate positive economic impacts as well as support many other sectors of local and state economies. In the summer of 2019, the Georgia Department of Transportation undertook a statewide study to estimate the annual economic impact of 102 study airports. The study estimated economic impacts for seven commercial airports and 95 general aviation airports. This report includes impacts related to **Jekyll Island Airport** and summarizes all Statewide Airport Economic Impacts.

Annual Economic Impacts for Jekyll Island Airport

Residents, businesses, and visitors benefit from the state's well-developed airport system. While supporting transportation, healthcare, tourism, and commerce, airports contribute to the economy. The Economic Impact Study identified specific economic impacts associated with the **Jekyll Island Airport** and other airport benefits. Key impacts for the **Jekyll Island Airport** follow.

Annual Visitors **9,284**

Employment Supported **33**

Annual Payroll **\$968,900**

Annual Spending **\$1,718,400**

Annual Economic Impact **\$2,687,300**

Airport-Supported Annual State & Local Sales & Income Tax Revenues **\$107,970**

Economic Impacts for Jekyll Island Airport

The table below provides information on the sources of annual economic impact estimated for the **Jekyll Island Airport**. For more information on the impacts reported here, consult the study's Technical Report available at dot.ga.gov/IS/AirportAid.

Annual Economic Impacts for Jekyll Island Airport

| | Employment | Payroll | Spending | Total Economic Activity |
|---------------------------------------|------------|------------------|--------------------|-------------------------|
| Airport Management & Business Tenants | 8 | \$279,300 | \$570,400 | \$847,700 |
| Capital Investment | 1 | \$31,000 | \$127,000 | \$158,000 |
| General Aviation Visitor Expenditures | 24 | \$658,600 | \$1,021,000 | \$1,679,600 |
| Total | 33 | \$968,900 | \$1,718,400 | \$2,687,300 |

Georgia Airports Support Connectivity

A flight from a Georgia airport is a gateway to over 40,000 worldwide airports, including over 19,000 airports in the US alone. When employers seek to relocate or expand, proximity to an airport is among the top 10 factors they consider in their decision making. Georgia's tourist industry also depends on the efficiency of air travel.

This map depicts destinations for flights departing from and arriving at **Jekyll Island Airport** on any given day. This information is generated from the FAA's National Offload Program (NOP). Flights represent only a fraction of all destinations that can be reached directly from the airport. The map helps to show how the airport supports the travel needs of businesses, visitors, and residents of the airport's service area.



Top Five Destinations for Jekyll Island Airport

1 Atlanta, Georgia

2 Macon, Georgia

3 Savannah, Georgia

4 St. Augustine, Florida

5 Athens, Georgia

Statewide Economic Impacts

Shown below are total annual statewide economic impacts. All economic impacts shown in this report for Hartsfield-Jackson Atlanta International Airport were obtained from a separate study for that airport conducted by the City of Atlanta. As shown, when all Georgia airports are considered, total annual statewide economic impacts are estimated at 450,502 jobs, \$9.2 billion in annual payroll, and \$73.7 billion in annual economic activity.

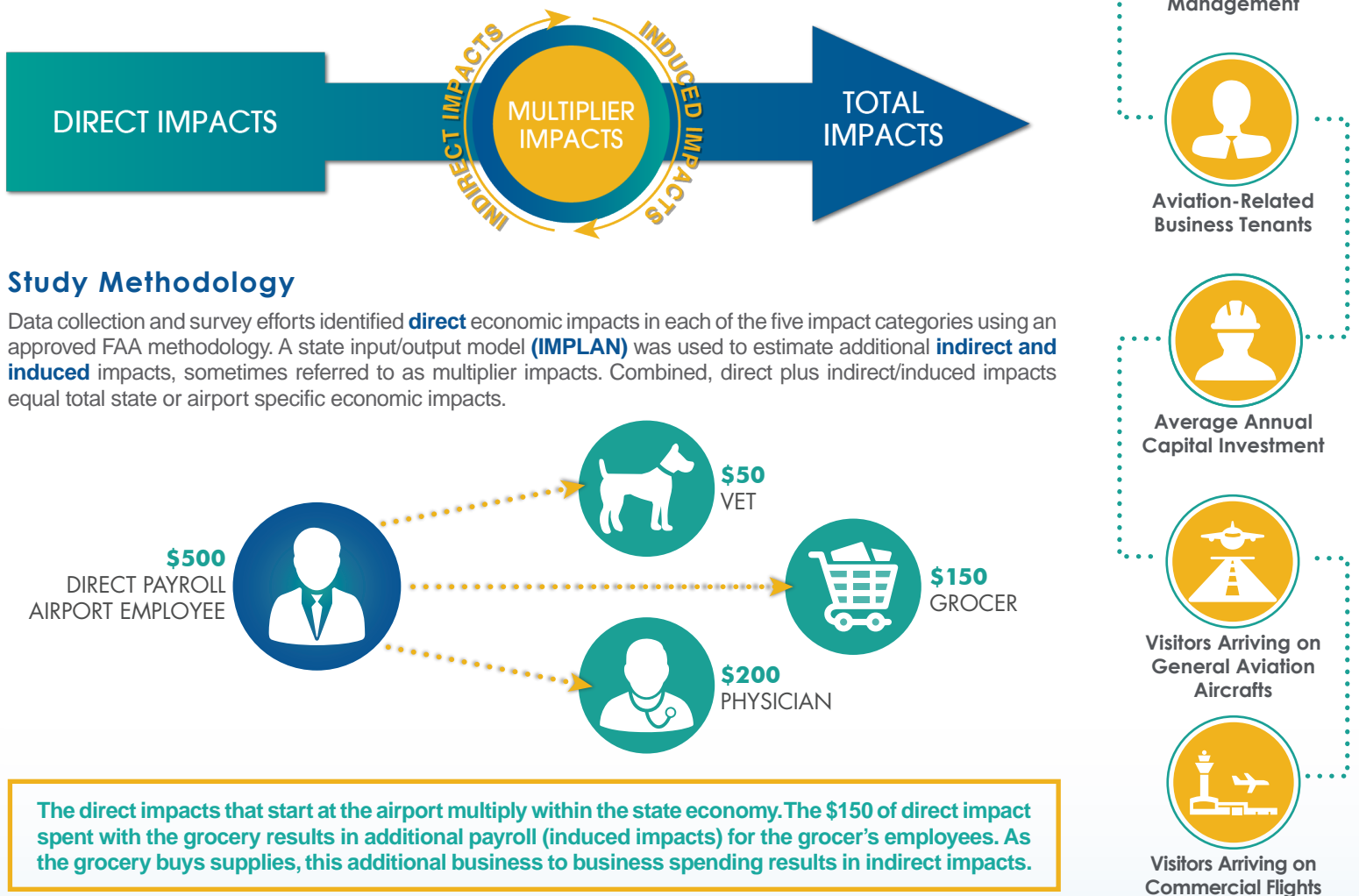
Statewide Economic Impacts All System Airports

| | Hartsfield-Jackson Atlanta International Airport* | Commercial Study Airports | General Aviation Study Airports | State Total |
|-------------------|---|---------------------------|---------------------------------|----------------|
| Employment | 383,242 | 52,376 | 14,893 | 450,502 |
| Payroll | \$16.7 billion | \$1.3 billion | \$271 million | \$9.2 billion |
| Economic Activity | \$66.8 billion | \$2.2 billion | \$828 million | \$73.7 billion |

*2016-2017 Technical Report, City of Atlanta Economic Impact Study

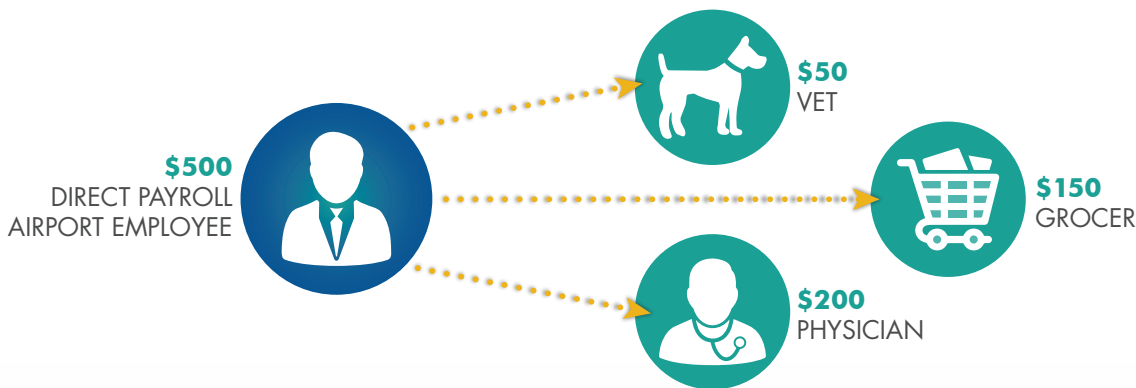
Economic Impact Categories and Measurements

The study identified impacts related to airport management (day-to-day airport operations), aviation-related business tenants, average annual capital investment, expenditures by visitors arriving on general aviation aircraft, and expenditures by visitors arriving on scheduled commercial airline flights. For each of these five categories, impacts were measured for **employment, payroll, spending, and annual economic activity**. Annual economic activity is the sum of payroll and spending. In addition, the study estimated state and local tax revenues that are generated by airport-supported activities.



Study Methodology

Data collection and survey efforts identified **direct** economic impacts in each of the five impact categories using an approved FAA methodology. A state input/output model (**IMPLAN**) was used to estimate additional **indirect and induced** impacts, sometimes referred to as multiplier impacts. Combined, direct plus indirect/induced impacts equal total state or airport specific economic impacts.

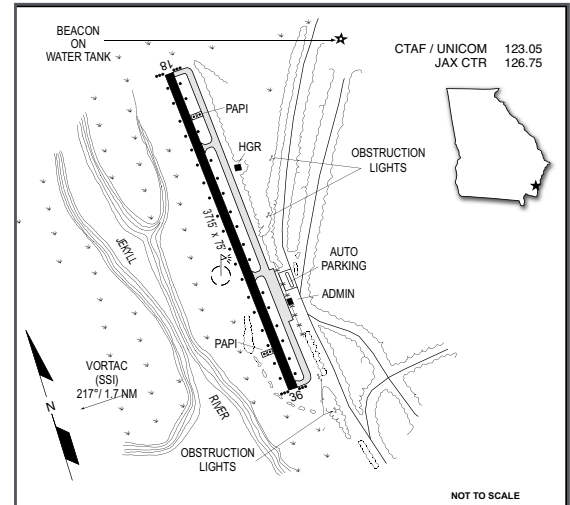


The direct impacts that start at the airport multiply within the state economy. The \$150 of direct impact spent with the grocery results in additional payroll (induced impacts) for the grocer's employees. As the grocery buys supplies, this additional business to business spending results in indirect impacts.

Jekyll Island Airport

Jekyll Island Airport is located in Glynn County on the coast of Georgia approximately 13 miles south of Brunswick and 48 miles north of St. Marys. Glynn County's population is about 82,000, but this number increases significantly during certain times of the year from second homeowners and vacationers. Almost 55,000 of the 82,000 residents live within a 30-minute drive of the airport. The primary highway access to the airport from the north and south is via US 17/Georgia Highway 25. Other highways in the airport vicinity include Interstate 95 and Georgia Highways 303 and 520.

The airport is owned and operated by the Jekyll Island Authority. The airport's is served by Runway 18/36 which is 3,715 feet long and accommodates general aviation related activities. There are several hotels and a first-class convention center on Jekyll Island. Visitors to the area sometimes arrive via the airport. Red Bug Motors, an airport business tenant, provides vehicle rentals for visitors flying to the island.



Examples of How Jekyll Island Airport Supports its Community

There is a good chance you benefit from different activities that the airport supports. Airports support healthcare and emergency services. Airports support the state's agricultural and forestry industries, and power companies rely on airports to keep electricity flowing. State and federal agencies use airports to protect the environment, and law enforcement benefits from airports. Businesses throughout Georgia rely on airports to improve their efficiency. Examples of how the airport benefits the community follow.

Conservation: Jekyll Island is the most accessible of Georgia's protected barrier islands. Development on the island is limited to preserve the area's natural state. In 2011, the Jekyll Island Authority (JIA) established a Conservation Program with the mission of preserving and enhancing the island's natural state, while providing nature-based educational and recreational opportunities. One of JIA's goals has been to enhance the visitor experience in order to sustain Jekyll Island's economic viability: this has been accomplished without reducing the island's protected land by a single acre. The Georgia Sea Turtle Center also benefits from the airport with "rescue" turtles being flown in from various locations around the United States. The airport provides the most convenient access to the island, bringing in visitors to help meet JIA's goal for sustaining the island's economic viability.

Vital Services: The successful control of mosquitoes can be a technical, ecological, and fiscal challenge; as it is often most effectively accomplished through aerial applications, Glynn County Mosquito Control relies on the airport to regulate the island's mosquito population. The airport is used by aircraft that distribute pesticides that help prevent the spread of disease associated with this airborne insect. Applications are of little threat to the environment, and mosquito control is essential to the quality of life for area residents and visitors.

Area Businesses: Jekyll Island is a major tourist destination with hotels such as the historic Jekyll Island Club attracting visitors from around the world. In addition to a wide selection of resort-type accommodations, the island now has a first-class convention center and nearby local shops. While the vast majority of visitors to the island do not arrive via the Jekyll Island Airport, some do. Once they are on the island, in keeping with the area's focus on the environment and conservation, visitors can rent golf carts at the airport to travel around the island. Spending by visitors who arrive via the airport is important to a viable local economy.

Training/Education: Flight training is important to sustaining many facets of both the civilian and the military aviation industries. According to study data, the airport hosts flight training for students attending Embry-Riddle Aeronautical University and Middle Georgia State University. The Georgia State Highway Patrol uses the airport for helicopter training, and the Navy conducts training operations at the airport every week using the Sikorsky SH-60/MH-60 Seahawk. University-related training helps fill the pipeline for pilots that have a commercial rating. The airport also accommodates training and activities that support law enforcement and support to national security.

THIS DOCUMENT WAS PREPARED BY

Jviation
900 S Broadway, Suite 350
Denver, CO 80209
303.524.3030
www.jviation.com

FOR MORE INFORMATION PLEASE CONTACT

Georgia Department of Transportation Aviation Programs
600 West Peachtree Street NW
Atlanta, Georgia 30308
404.631.1990 | dot.ga.gov/IS/AirportAid
Email: aviationprograms@dot.ga.gov